

VENTILATION

EOC 56

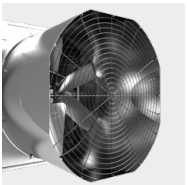


since
1967

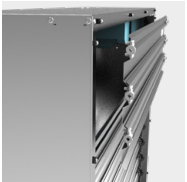
EOC 56

THE BIGGER - THE BETTER

Exhaust fan with air outlet cone in the execution 56". Thanks to the benefits of the "Venturi effect" combined with its bigger dimensions, **EOC 56** guarantees extremely positive results in terms of energy efficiency and cost reduction. The cone special shape, which has the same outer dimensions of the fan's body, permits to install more **EOC 56** in comparison to similar products. Body in galvanised steel, propeller and shutter blades in aluminium alloy guarantee the necessary protection also in harsh environments. Tested in our PERlab.



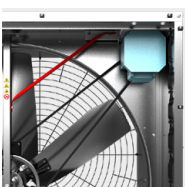
Security grid on the squared cone



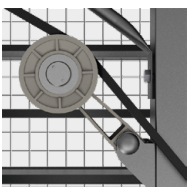
Removable shutter blades for easy maintenance/inspection



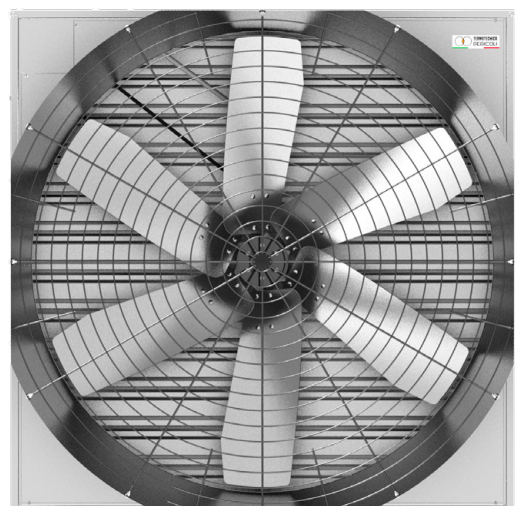
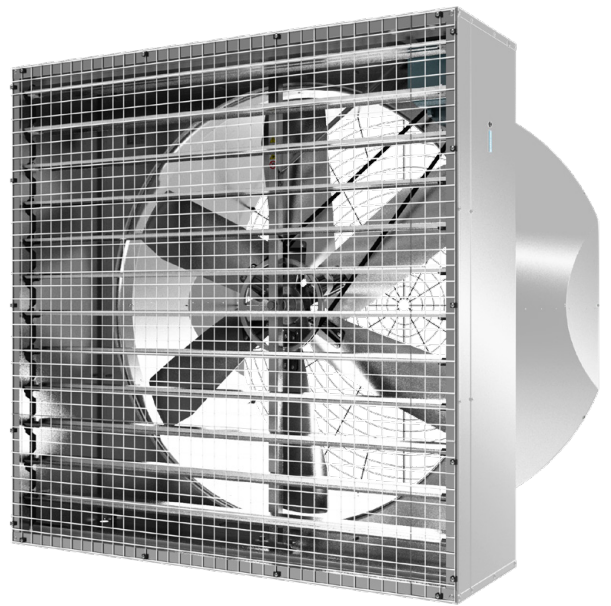
NT safety net on air intake side (optional)



Sturdy and practical motor fixing system



ABT automatic belt tensioner (optional)



Technical features

EOC 56

EOC 56 - Internal test number A27b, A30b, A34b, A35b*

Model	Propeller rotation speed (0 Pa - 0 inH ₂ O)	Air flow					Absorbed power (0 Pa - 0 inH ₂ O)	Absorbed power (25 Pa - 0.10 inH ₂ O)	Specific power input (0 Pa - 0 inH ₂ O)	Specific power input (25 Pa - 0.10 inH ₂ O)	Ventilating Efficiency Ratio (0 Pa - 0 inH ₂ O)	Ventilating Efficiency Ratio (25 Pa - 0.10 inH ₂ O)	Sound pressure level Lpa**
		0 Pa	25 Pa	50 Pa	75 Pa	100 Pa							
		0 inH ₂ O	0.10 inH ₂ O	0.20 inH ₂ O	0.30 inH ₂ O	0.40 inH ₂ O							
EOC 56-3/2	537 RPM	33.000 cfm	29.800 cfm	26.200 cfm	-	-	1620 W	1750 W	29,0 W/(1000m ³ /h)	34,6 W/(1000m ³ /h)	20,3 cfm/W	17 cfm/W	75,4 dB
		56.000 m ³ /h	50.600 m ³ /h	44.500 m ³ /h	-	-							
EOC 56-6/2	480 RPM	30.900 cfm	28.800 cfm	26.400 cfm	23.200 cfm	17.800 cfm	1540 W	1710 W	29,3 W/(1000m ³ /h)	34,9 W/(1000m ³ /h)	20,1 cfm/W	16,9 cfm/W	72,6 dB
		52.500 m ³ /h	48.900 m ³ /h	44.800 m ³ /h	39.400 m ³ /h	30.300 m ³ /h							
EOC 56-3/1,5	481 RPM	29.500 cfm	26.000 cfm	21.500 cfm	-	-	1170W	1270 W	23,3 W/(1000m ³ /h)	28,8 W/(1000m ³ /h)	25,3 cfm/W	20,4 cfm/W	74,2 dB
		50.200 m ³ /h	44.200 m ³ /h	36.500 m ³ /h	-	-							
EOC 56-6/1,5	433 RPM	28.000 cfm	25.500 cfm	22.500 cfm	18.000 cfm	-	1120 W	1270 W	23,5 W/(1000m ³ /h)	29,2 W/(1000m ³ /h)	25 cfm/W	20,1 cfm/W	72,1 dB
		47.600 m ³ /h	43.400 m ³ /h	38.300 m ³ /h	30.700 m ³ /h	-							

*Tested according to ANSI/AMCA 210-07 ANSI/ASHRAE 51-07 complying with ASABE/S565 OCT 2005.

**Measurement surface according to UNI EN ISO 3744 pic C.7

Note: All fans tested with shutter and protection net @ 400V-50Hz.

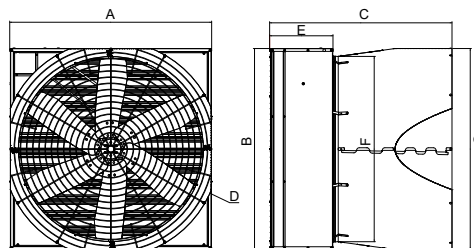
Dimensions and loading possibilities

Model	Weight
EOC 56 - 3	109 kg
EOC 56 - 6	112 kg

Loading possibilities on pallet	EOC 56
Fully assembled version (FA)*	
LxWxH - mm	1700x2290x2270
N° pieces	5
Gross weight - kg	600

Loading possibilities		
	Fully assembled version (FA)*	Knock-down version (KD)
Container 20ft	16	100
Container 40ft	36	200
Container 40ft HC	36	220
Camion	41	250

*Fan body and shutter are delivered pre-assembled, whereas the cone (in sectors), brackets and safety nets are delivered separately in flat pack form.



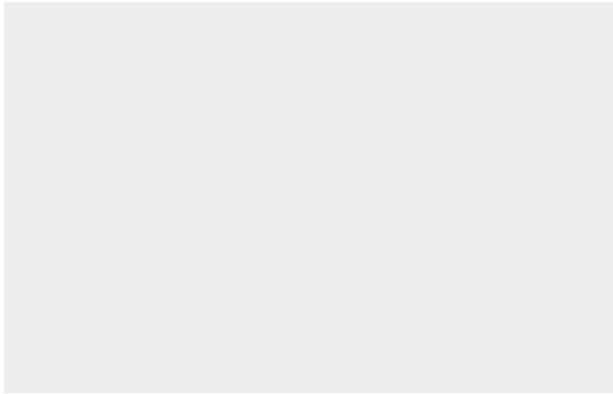
Dimension	EOC 56
Dimension - A - [mm]	1537
Dimension - B - [mm]	1530
Dimension - C - [mm]	1388
Dimension - D - [ø mm]	1650
Dimension - E - [mm]	482
Dimension - F - [ø mm]	1400
Dimension - G - [mm]	1530

Versions



Accessories





TERMOTECNICA PERICOLI S.r.l.
Regione Rapalline, 44 - 17031 Albenga, Italia
tel. 0182 589006 fax 0182 589005 pit@pericoli.com

PERICOLI ASIA PACIFIC Sdn. Bhd.
pap@pericoli.com

PERICOLI CENTRO AMERICA
pca@pericoli.com

PERICOLI MIDDLE EAST
pme@pericoli.com

www.pericoli.com